



una

SELECTED HOTEL PROJECTS

10 YEARS una
2011 - 2021

UNA IS AN ARCHITECTURE, PROJECT VISIONING, AND PLANNING CONSULTANT FIRM.

Founded in 2009 by a group of individuals who have significant experience in this line of business, una has been driven by a strong philosophy devoted to enrich human experience and the quality of the environment through its planning and architectural works. With their expertise, una aims to give its best contribution and services to the clients. Since then, una has been renowned for bringing a combination of design, management, and technical expertise to every project.

The company has deep experience in a vast range of public building projects, including hotels, residences, office buildings, commercial developments, and mixed use developments.

Providing professional architectural services, the work scope of the company comprises of providing project visioning, design concepts, schematic designs, permit documents, tender documents, construction drawings, and coordination during construction.

One of the most important factors in the success of una has been the ability to provide architectural services for a diverse range of clients in widely various sectors, functions, scales, and locations. By that, it has established a nationwide reputation by doing many projects across the region.

Core Values: C-R-E-A-T-I-V-E

- > Credible
Uphold the competence and professionalism.
- > Result
Strive to give the best output.
- > Excellence
Perfection is key.
- > Added value
Benefit in all related aspect.
- > Team work
Comprehensive process involving best talents.
- > Innovative
Deliver fresh ideas.
- > Visionary
To imagine and inspire.
- > Evolve
Adaptive to the always dynamic condition.

DESIGN STYLE

When it comes to design philosophy, una is not bound by any grand idealisms or specific style inclinations. It is key to design relevantly. The design is front and foremost, contextual, in such a way that it fulfills all the necessary requirements : it fulfills the client's needs, serves public requirements, blends with its surroundings, has aesthetic values, balanced with the environment, and is possible to be realized. By working with clients to understand their facility needs, budget requirements, site conditions and organizational goals, rather than providing readymade, conventional solutions, una is able to adapt to the changing and developing needs of clients, regardless of the nature of their project.

una's successful completion of projects affords the company a host of return clients, it illustrates the reliance of clients on una's expertise, engaging the practice in multiple design projects.

GOOD DESIGN IS GOOD BUSINESS

Design must reflect the practical and aesthetics in business. By focusing into specific field, more benefit in the term of business is achievable, and the first step is try to understand the business architecture. Without those understanding, most of the design will fail. Great design will not sell an inferior product, but it will enable a great product to achieve its maximum potential.

TALENTS

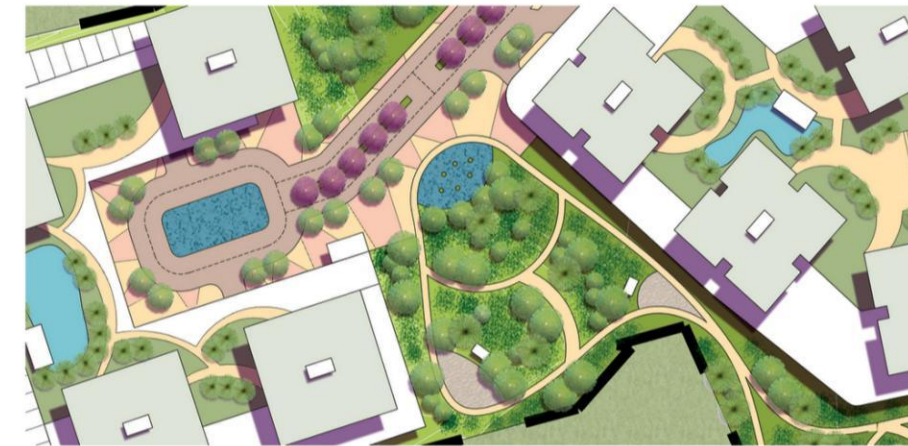
una team consists of professionals with creative and idealistic minds, committed to design excellence, innovation, and sustainability, to look for and create solutions for each project. Best design occurs when individuals come together, challenging each other to invent new techniques, and search for new expressions. In una, passionate architects work alongside the most experienced hands, blending wisdom with fresh inspiration.

In top management level, una consisted of skilful leaders who have architectural knowledge in conceptual as well as technical and coordination. The management board guides the strategic direction of practice.

SUSTAINABLE DESIGN

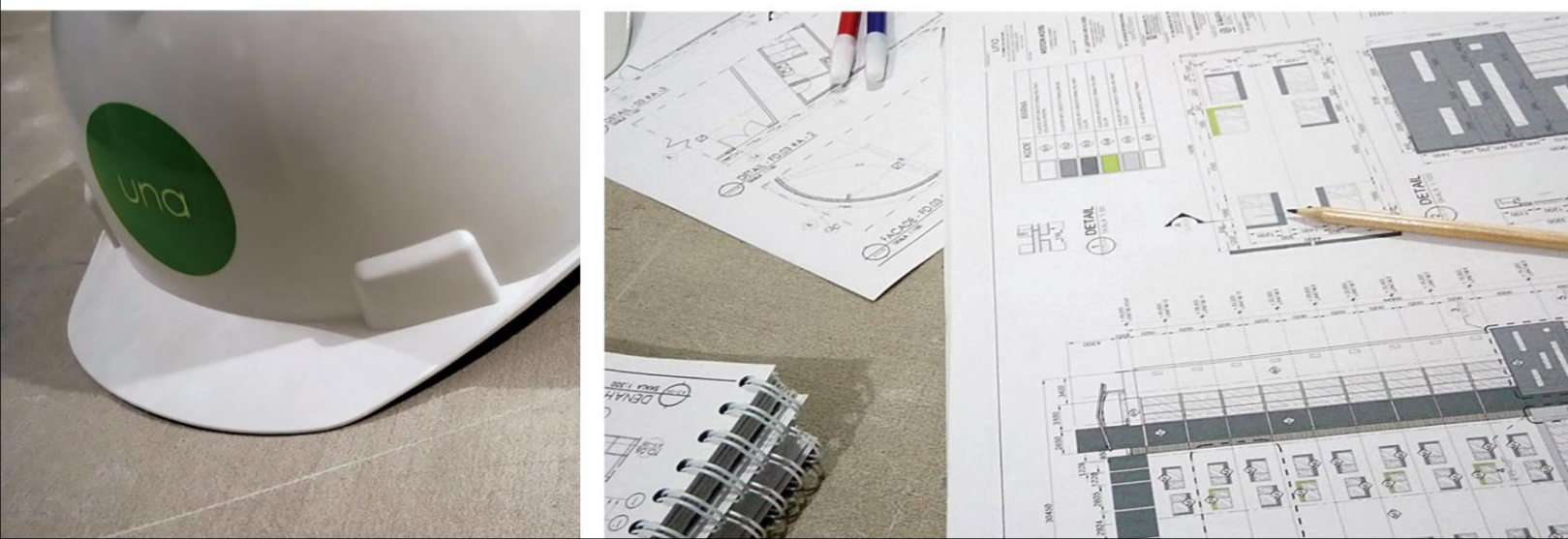
As a building consultant, una fully recognize the important role in preserving and protecting the environment.

It is important to develop environmentally-friendly properties that encourage a green lifestyle.



CERTIFICATIONS

una and its personnels are registered and certified in their respective areas, both in corporate and technical legal aspects.



SELECTED PROJECT LIST

OFFICE

Bringin Gigantara Head Office, Bekasi, West Java
Cideng 30, Cideng Barat, Jakarta
Gapura Angkasa Head Office, Kemayoran, Jakarta
Graha Salemba, Salemba, Jakarta
Graha Pramuka, Rawamangun, Jakarta
Guntur Office Building, Setiabudi, Jakarta
Heksa Group Head Office, Menteng, Jakarta
Serpong Office Park, Tangerang, Banten
Tamara Land Office Tower, Dukuh Atas, Jakarta
Yong Ma Office, Radio Dalam, Jakarta

INDUSTRIAL

Aimfood Manufacturing, MM2100 - Cibitung, West Java
Cometa Can Factory, Bitung - Tangerang, Banten

HOTEL

Arnavia Condotel Dramaga, Bogor, West Java
Aston Ponorogo City Hotel, Ponorogo, East Java
Atria Hotel Serpong Extension, Tangerang, Banten
B Fashion Hotel, Tomang, Jakarta
Batam City Hotel, Batam Riau Islands
Batiqa Hotel Lampung, Bandar Lampung, Lampung
Durian Residence Suites, Makassar, South Sulawesi
Dalem Kaum Hotel, Bandung, West Java
de Braga by Artotel, Bandung, West Java
Fame Hotel Cakung, Jakarta
Fame Hotel Jayapura, Jayapura, Papua
Fave Hotel Cengkareng, Tangerang, Banten
Fave Hotel Pekanbaru, Pekanbaru, Riau
Grand Whiz Hotel Lebak Bulus, Jakarta
Grand Zuri Hotel Baturaja, Baturaja, South Sumatra
Grand Zuri Hotel Facelift, various locations
Harper Hotel Cirebon, Cirebon, West Java
Harper Hotel Kupang, Kupang, East Nusa Tenggara
Horison Hotel Plumbon, Cirebon, West Java
Kila Hotel Senggigi, Lombok, West Nusa Tenggara
Labersa Toba Hotel, Toba, North Sumatera
Marbella Cendrawasih Hotel & Convention, Puncak, West Java
MaxOne Hotel Cakranegara, Mataram, West Nusa Tenggara
MaxOne Hotel Malioboro City, Adi Sucipto, Jogjakarta
MaxOne Hotel Pemuda, Rawamangun, Jakarta
Nite & Day Hotel Gunung Sahari, Jakarta
Permata Hotel, Bogor, West Java
Puteri Duyung Cottage Renovation, Ancol, Jakarta
Rocky Plaza Hotel Padang Renovation, Padang, West Sumatra
Senggigi Resort Development, Lombok, West Nusa Tenggara
The 101 Balikpapan Regency, Balikpapan, East Kalimantan
Tusita Hotel, Tuban, Bali
U Star Square, Manado, North Sulawesi
Whiz Hotel Pekanbaru, Pekanbaru, Riau
Whiz Prime Hotel Dago, Bandung, West Java
Whiz Prime Hotel Padang, Padang, West Sumatra

APARTMENT

Cinere Mansion, Cinere, West Java
Crown City, Cengkareng, Jakarta
de Jade, Cinere, West Java
Grand Dhika City Jatiwarna - Arlington Tower, Bekasi, West Java
Grand Dhika Connexio, Cikunir, Bekasi, West Java
Grand Park Pakuan, Bogor, West Java
H Residence Plemburan Hinggil, Plemburan, Jogjakarta
Habitat Residence, Karawaci - Tangerang, Banten
Kahala Resort Residences, Karawang, West Java
Precious Apartment Aeropolis, Tangerang, Banten
The Beverly, Serpong, Tangerang, Banten

COMMERCIAL

Balikpapan Regency H1, Balikpapan, East Kalimantan
Cirebon Gateway, Cirebon, West Java
GDC Central, Depok, West Java
Johnny Andrean Group, various locations
TransMart Balikpapan, Balikpapan, East Kalimantan

MIXED USE DEVELOPMENT

Jatibarang Square Plaza, Jatibarang, West Java
Labersa Pekanbaru, Riau
Sambong Town Square, Batang, Central Java

MASTERPLANNING

Cikarang CBD, Cikarang, West Java
Citraswarna Grande, Karawang, West Java
Karawaci CBD, Karawaci, Tangerang
Manokwari Public Ammenities, Manokwari, Papua

EDUCATIONAL

Astra Vocational School Bogor, Bogor, West Java
BRI Corporate University, Jakarta
Dago Eduplex, Bandung, West Java
Telkom University Student Center, Bandung, West Java

CLIENT LIST

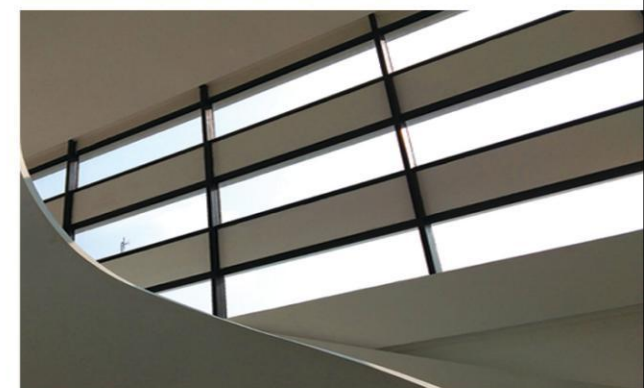
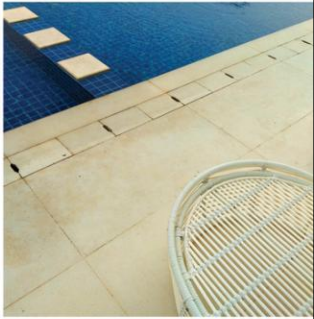
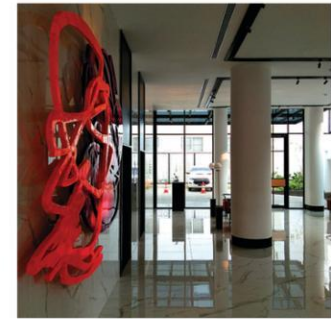
Citraswarna Group
Halim Kalla Group
Hutahaeen Group
Johnny Andrean Group
KSO Paramount Serpong
Marbella - Konrat Pudjiadi Group
PT Adhi Persada Properti
PT Agro Investama
PT Aimfood Manufacturing Indonesia
PT Aman Anugerah Abadi
PT Artoda Karya Gemilang
PT Astra International, Tbk.
PT Bank Rakyat Indonesia (Persero), Tbk.
PT Bringin Gigantara
PT CK Graha Propertindo
PT Cometa Can Indonesia
PT Cometa International
PT Dwi Mandiri Indo Jaya
PT Elektrindo Artha Pratama
PT Esthy Indo Makmur
PT Estrella Delapan Belas Indonesia
PT Gapura Angkasa
PT Gapura Pakuan Properti
PT Graha Amalia Pradhana Padang
PT Graha Utama Property
PT Grako Mandiri Persada
PT Himalaya Everest Jaya
PT HK Realtindo
PT Intan Development
PT Inti Hosmed
PT Jaya Anugerah Tritama Indah
PT Kasih Karunia Sejati
PT Kreasi Edulab Indonesia
PT Lentera Griya Asia
PT Mandiri Inti Realty
PT Marudai Mas
PT Mega Pasanggrahan Indah
PT Minardi Hotel International
PT Panca Mahardika
PT Papua Sukses Mandiri
PT Perkasa Lestari Permai
PT Permata Mulia Jaya Indah
PT Satu Stop Sukses
PT Setia Meranti
PT Sinar Mandala Bangun Lestari
PT Sumaraja Indah
PT Sumber Mitra Realtindo
PT Surya Internusa Hotels
PT Telkom Indonesia, Tbk.
PT Trans Retail
PT Tumbuh Sehat Makmur
PT Wijaya Karya Bangunan Gedung



PT ATELIER UNA INDONESIA

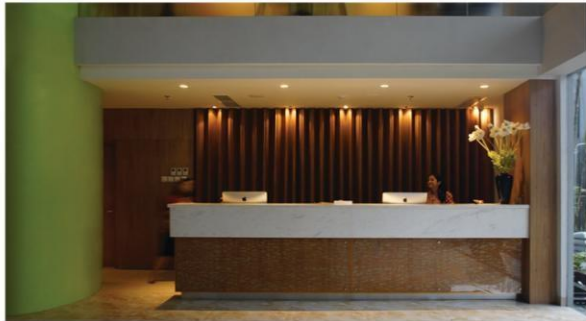
DE BRAGA BY ARTOTEL ✓

Owner	PT Wijaya Karya Bangunan Gedung
Project Type	Hotel
Site Area	1,763 sqm
Total Building Area	7,141 sqm
Number of Storey(s)	14 storeys & 1 basement
Location	Jl. Braga No.10, Bandung West Java, Indonesia
Design Period	2016 - 2017
Construction Period	2017 - 2018
Architectural Consultant	PT Atelier Una Indonesia
Structural Consultant	PT Concedo Efigies Idea
MEP Consultant	PT Malmass Mitra Teknik
Hotel Operator	Artotel
Main Contractor	PT Wijaya Karya Bangunan Gedung



MAXONE HOTEL PEMUDA >

Owner	PT Mandiri Inti Realty
Project Type	Hotel
Site Area	1,104 sqm
Total Building Area	4,149 sqm
Number of Storey(s)	8 storeys & 1 basement
Location	Jl. Pemuda, Rawamangun Jakarta, Indonesia
Design Period	2012 – 2013
Construction Period	2013 – 2015
Architectural Consultant	PT Atelier Una Indonesia
Structural Consultant	(inhouse by Owner)
MEP Consultant	PT Sumber Daya Anugerah Pratama
Interior Consultant	PT Atelier Una Indonesia
Hotel Operator	Milestone Pacific Hotel Group
Main Contractor	PT Gading Mandiri Graha



HARPER HOTEL KUPANG >

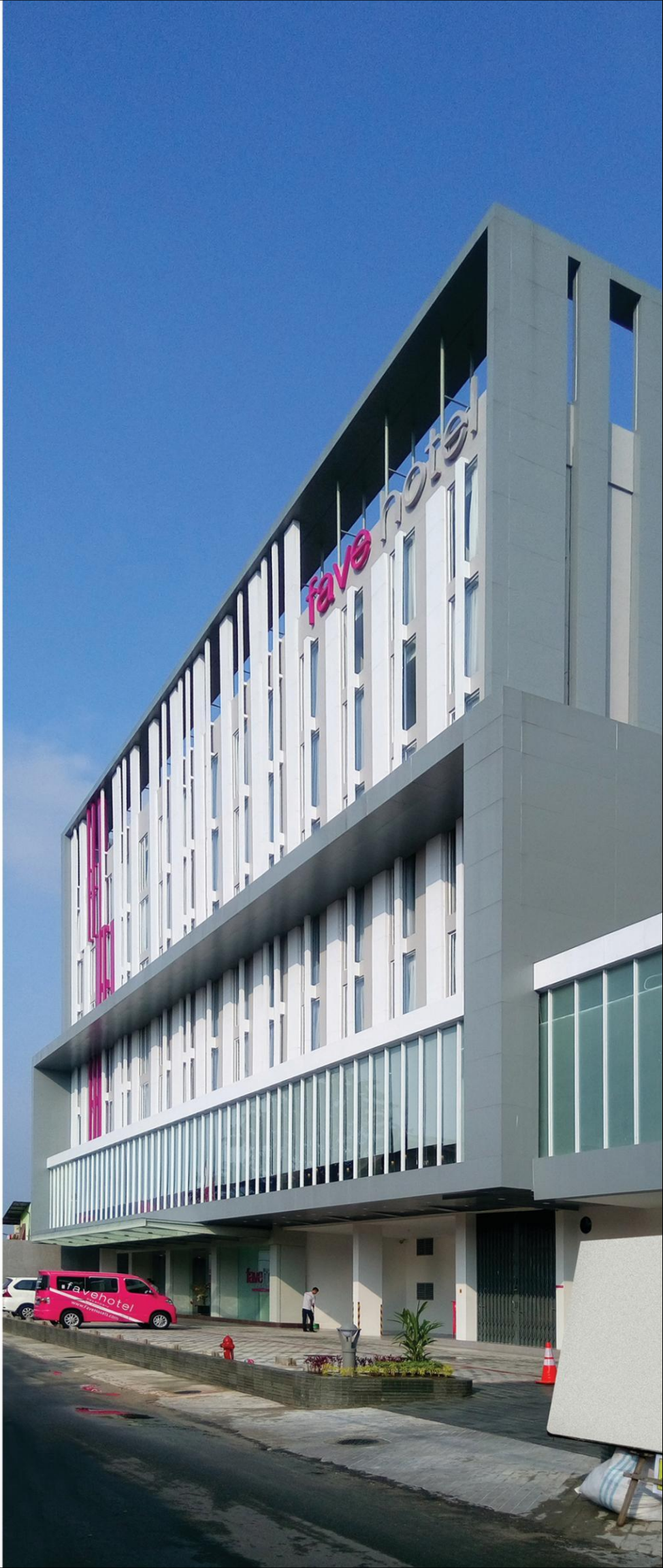
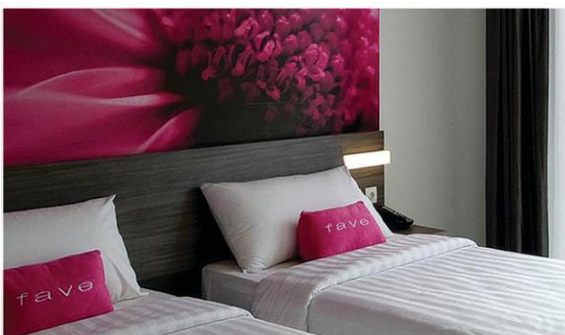
Owner	(undisclosed)
Project Type	Hotel & Convention Hall
Site Area	5,785 sqm
Total Building Area	18,287 sqm
Number of Storey(s)	9 storeys & 1 basement
Location	Jl. W.J. Lamentik, Kupang, East Nusa Tenggara, Indonesia
Design Period	2019 – 2020
Construction Period	2020 – 2022 (est.)
Architectural Consultant	PT Atelier Una Indonesia
Structural Consultant	(inhouse by Owner)
MEP Consultant	(inhouse by Owner)
Interior Consultant	PT Atelier Una Indonesia
Hotel Operator	Archipelago International
Quantity Surveyor	(inhouse by Owner)
Main Contractor	(inhouse by Owner)

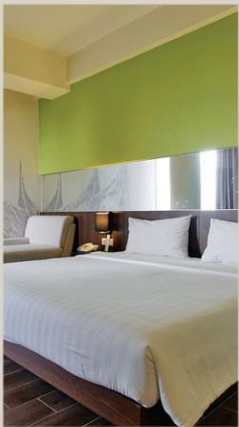




FAVE HOTEL PEKANBARU ✓

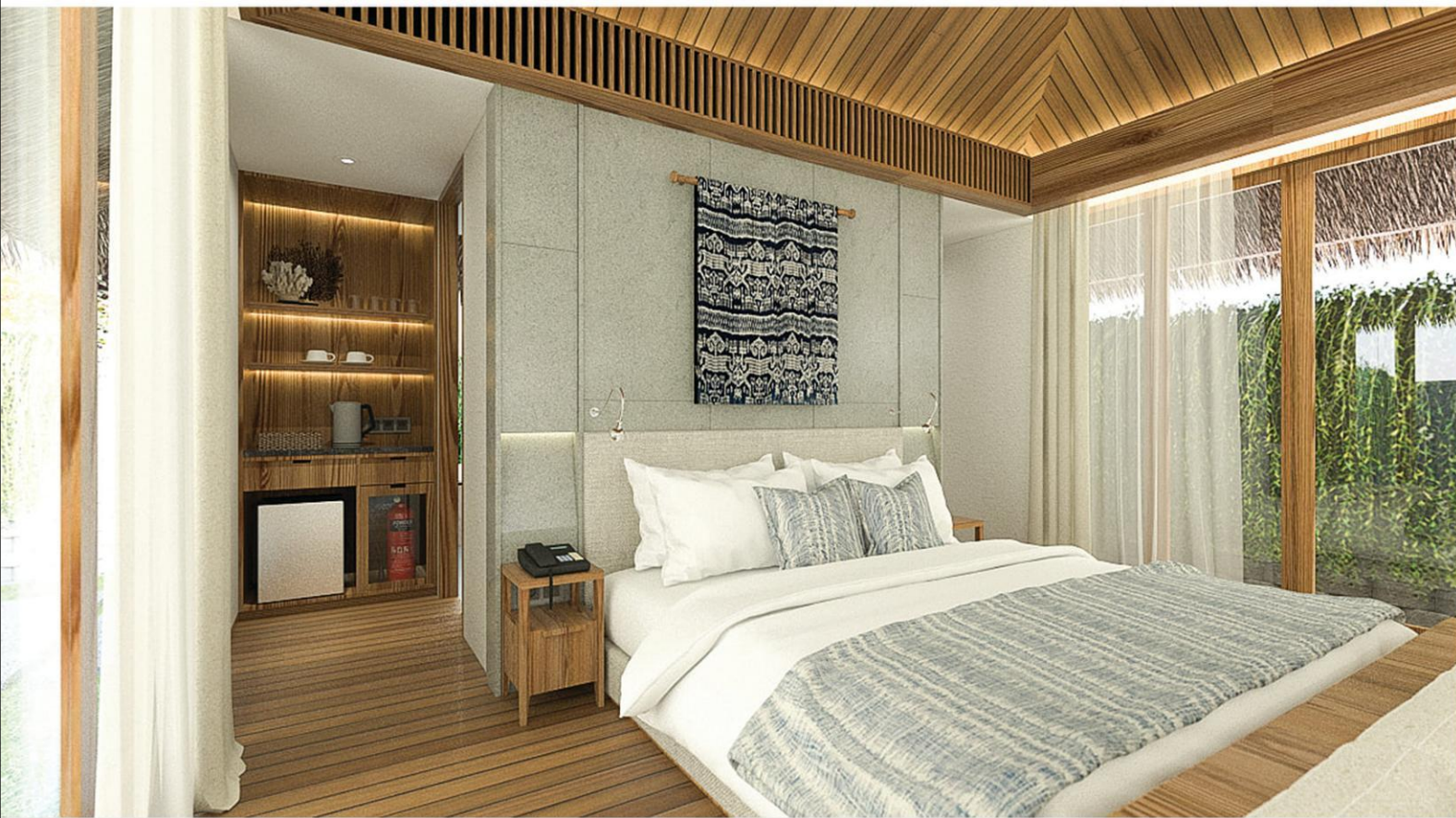
Owner	PT Dwi Mandiri Indo Jaya
Project Type	Hotel
Site Area	1,871 sqm
Total Building Area	5,263 sqm
Number of Storey(s)	9 storeys
Location	Jl. Jenderal Sudirman, Pekanbaru, Riau, Indonesia
Design Period	2013 – 2014
Construction Period	2014 – 2015
Architectural Consultant	PT Atelier Una Indonesia
Structural Consultant	PT Cipta Sukses
MEP Consultant	PT Pasada
Interior Consultant	PT Atelier Una Indonesia
Hotel Operator	Archipelago International
Quantity Surveyor	PT Quality Surveyor Indonesia
Main Contractor	PT Dwi Mandiri Indo Jaya





WHIZ PRIME HOTEL PADANG

Owner	PT Graha Amalia Pradhana Padang
Project Type	Hotel
Site Area	2,122 sqm
Total Building Area	5,034 sqm
Number of Storey(s)	8 storeys & 1 basement
Location	Jl. Khatib Sulaiman No.48A, Padang West Sumatera, Indonesia
Design Period	2015 - 2016
Construction Period	2016 - 2017
Architectural Consultant	PT Atelier Una Indonesia
Structural Consultant	PT Susanto Ciptajaya
MEP Consultant	PT Susanto Ciptajaya
Interior Consultant	PT Atelier Una Indonesia
Hotel Operator	Intiwhiz Hospitality Management
Quantity Surveyor	PT Quality Surveyor Indonesia
Main Contractor	CV Dwi Martha Jaya



< PUTRI DUYUNG RESORT

Owner	PT Pembangunan Jaya Ancol, Tbk.
Project Type	Resort Hotel
Number of Storey(s)	2 storeys
Location	Jl. Lodan Timur, Taman Impian Jaya Ancol Jakarta, Indonesia
Design Period	2017 – 2018
Design Consultant	PT Atelier Una Indonesia



WHIZ HOTEL PEKANBARU



Owner	PT Lentera Griya Asia
Project Type	Hotel
Site Area	928 sqm
Total Building Area	6,132 sqm
Number of Storey(s)	14 storeys & 1 basement
Location	Jl. Jenderal Sudirman, Pekanbaru Riau, Indonesia
Design Period	2014 – 2015
Construction Period	2015 – 2016
Architectural Consultant	PT Atelier Una Indonesia
Structural Consultant	PT Cipta Sukses
MEP Consultant	PT Malmass Mitra Teknik
Interior Consultant	PT Atelier Una Indonesia
Hotel Operator	Intiwhiz Hospitality Management
Quantity Surveyor	PT Cipta Pratama Costindo
Construction Management	PT Cremona Paramitra
Main Contractor	PT Adhi Karya



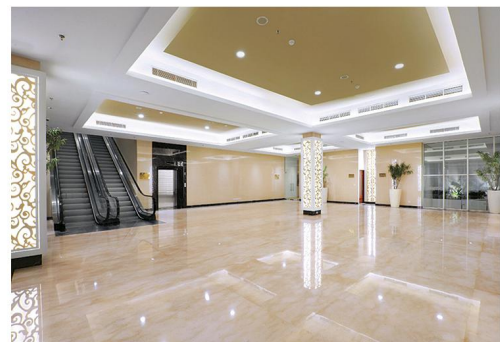
PERMATA HOTEL

Owner	PT Permata Mulia Jaya Indah
Project Type	Hotel (Extension & Renovation)
Site Area	2,673 sqm
Total Project Area	3,923 sqm
Number of Storey(s)	3 storeys
Location	Jl. Pajajaran, Bogor, West Java, Indonesia
Design Period	2016 – 2018
Construction Period	2018 – 2020
Architectural Consultant	PT Atelier Una Indonesia
Structural Consultant	Jahja Noer Jusuf
Interior Consultant	PT Atelier Una Indonesia
Quantity Surveyor	PT Persada Optima Niceta
Construction Management	Dono Suryanto
Main Contractor	Concept House



✓ ATRIA HOTEL SERPONG EXTENSION & BALLROOM

Owner	Paramount Land
Project Type	Hotel Facilities
Number of Storey(s)	2 storeys
Location	Jl. Bulevar Gading Serpong, Tangerang Banten, Indonesia
Design Period	2017 – 2018
Design Consultant	PT Atelier Una Indonesia



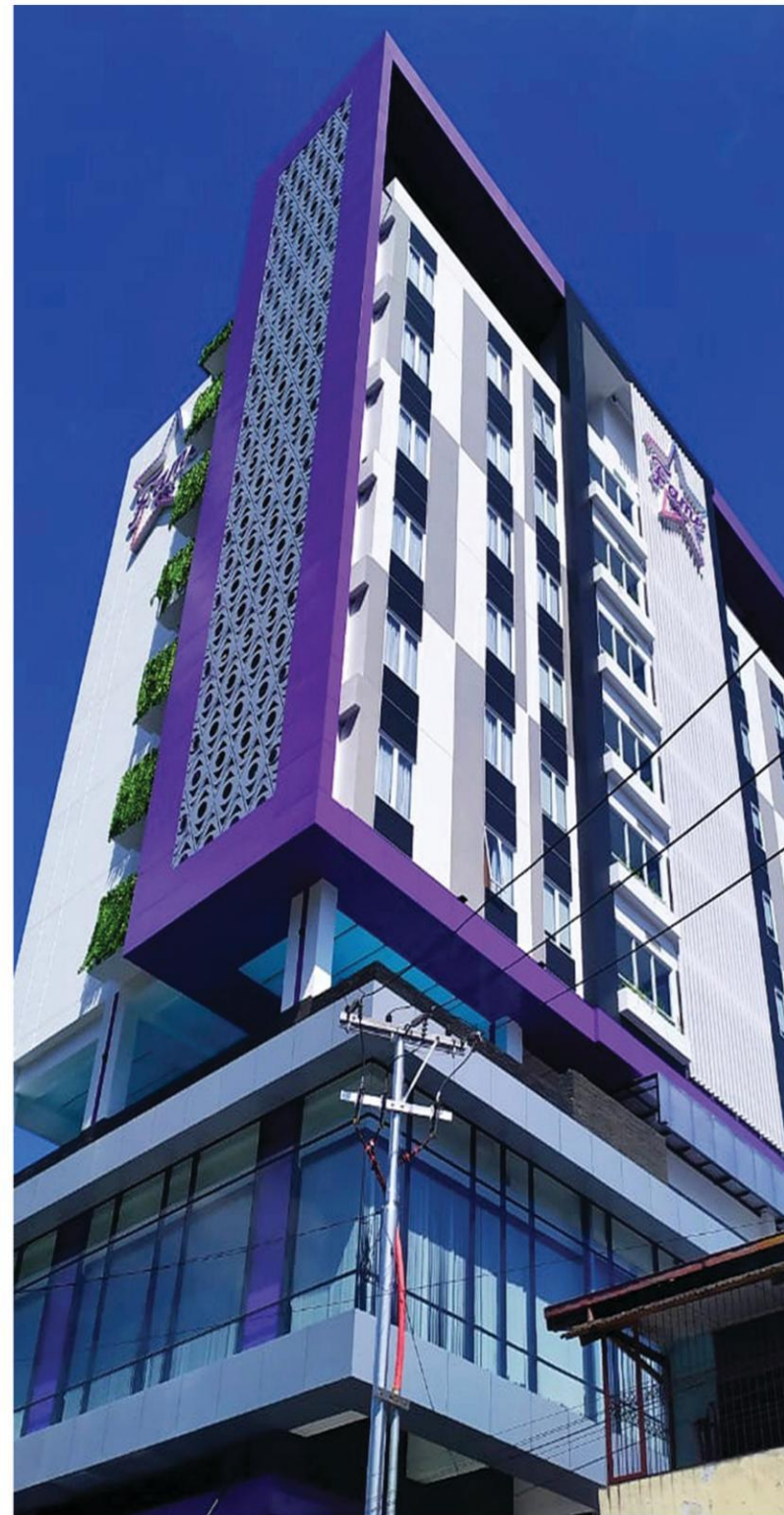
✓ ROCKY PLAZA HOTEL

Owner	PT Puti Bungsu
Project Type	Hotel Interiors
Number of Storey(s)	7 storeys
Location	Jl. Permindo, Padang West Sumatra, Indonesia
Design Period	2016 – 2018
Design Consultant	PT Atelier Una Indonesia

FAME HOTEL JAYAPURA >

(NKA. FOX HOTEL JAYAPURA)

Owner	PT Papua Sukses Mandiri
Project Type	Hotel
Site Area	1,435 sqm
Total Building Area	7,630 sqm
Number of Storey(s)	11 storeys & 1 basement
Location	Jl. Pembangunan, Jayapura Papua, Indonesia
Design Period	2015 - 2016
Construction Period	2017 - 2019
Architectural Consultant	PT Atelier Una Indonesia
Structural Consultant	PT Cipta Sukses
MEP Consultant	PT Pasada
Interior Consultant	PT Atelier Una Indonesia
Hotel Operator	Parador
Quantity Surveyor	An'an Sutiana
Main Contractor	PT Modern Widya Teknika



PT ATELIER UNA INDONESIA

HEAD OFFICE
Kirana Boutique Office E2 No. 7
Kirana Avenue 3
Kelapa Gading, Jakarta 14250
Indonesia
T. (62-21) 450 7878
E. contact@una.co.id

www.una.co.id

COPYRIGHT

The content provided by here, unless otherwise noted, is copyrighted to PT Atelier Una Indonesia. All use is subject to the terms and conditions set forth below.

All materials contained on here, including all text and images, are copyrighted and are protected by applicable copyright laws. They may not be published, reproduced, copied, modified, uploaded, transmitted, posted, transferred or distributed in any way, without PT Atelier Una Indonesia's ("una") prior written consent.

Illustrations, photographs, computer drawings, etc. may be the property of una, or illustrators and photographers hired by una, its clients and/or suppliers, and are used on here in accordance with individual agreements. una does not grant any express or implied right to you under any license, copyrights, patents or trademarks. No portion of these materials, including photography, may be reproduced without the express written consent of una.